



BROOKE HOSPITAL FOR ANIMALS (INDIA)

Affiliate of the Brooke, an international charity with a mission to transform the lives of working equines.



*"For the sake of any animal you have ever loved,
I implore you to help carry on this great and needful work for suffering
animals whose lives are ones of unremitting toil."*

- Dorothy Brooke (Founder of the Brooke)

WHY WORKING EQUINES IN INDIA NEED US?

In India, working equids are owned by marginalised sections of the society. For generations these communities have been engaged in livelihoods, which are fast losing its relevance in modern times, thereby nudging them towards acute poverty. About 70% of working equids owned by these communities are engaged in the Brick Kiln (BK) industry and rest are scattered across various sectors such as transportation of people and goods, small scale markets, tourism and agriculture.

The work environment of these working equids is exploitative. They are subject to lack of proper handling, incorrect husbandry practices and care. These conditions are compounded by the limited financial resources of the equine owner, resulting in numerous health issues of these working equids. Some of the commonly occurring equine health issues are –

Due to lack of proper handling and care

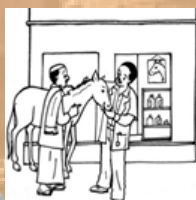
- Expression of undesirable behaviour
- Incidences of preventive injuries, like harness and saddlery induced galls/wounds

Due to poor husbandry & management practices

- Haemoprotozoan disease viz. Babesiosis, Trypanosomiasis
- Parasitic Disease (Internal and External)
- Glanders, a zoonotic disease

HOW DO WE MAKE A DIFFERENCE?

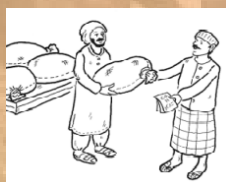
We Work Through Our Multidisciplinary Teams in the Following Thematic Areas



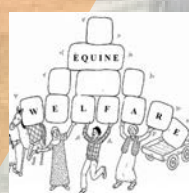
Animal Health & Welfare



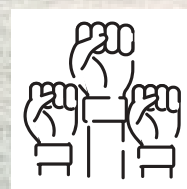
Community Development



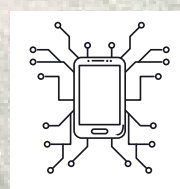
Livelihood & Resilience



Behaviour Change



Advocacy



Information and Communication Technology (ICT)

OUR WORK AT GROUND LEVEL



Animal Health & Welfare

- Ensuring emergency treatment services, installation of community led first aid kits (FAK), vaccination, deworming and health checks.
- Collaborations with veterinary universities and technical institutes for capacity building and skill enhancement of veterinarians, paravets and local service providers (LSPs).
- Linkages of equine owning communities with LSPs such as farrier, and hair clipper.

Community Development

- Rapport building with equine owning communities.
- Identification of resources, KAP (knowledge, attitude and practices), and equine and community linked issues.
- Participatory programme planning & implementation by the communities under the facilitation of project field workers.
- Capacity building of equine owners on various equine health & welfare issues, following different participatory approaches.
- Creating a platform for ensuring sustainable animal welfare in the form of three tier Community Based Organizations (CBOs).
- Provision of quality resources and enhancing the linkages of all the relevant stakeholders with equine owning communities and CBOs.



Livelihood and Resilience

- Developing alternative income generating activities to ensure better financial conditions of the equine owning communities.
- Inclusion and linkage of equine owning communities with government schemes that are intended for their welfare as part of the vulnerable section of the society.
- Link equine owning communities with financial instruments/insurance for enhancing their resilience.

Behaviour Change

- Understanding the origin of problem (beliefs, experiences, environmental conditions) and its implication.
- Assessing capabilities of individual or community, opportunities for them and level of motivation present within them.
- Understanding different stages of behaviour change as it is complex and time consuming.
- Continued supervision, support, monitoring and appreciation of those who help bring the positive change for working equines.



Advocacy

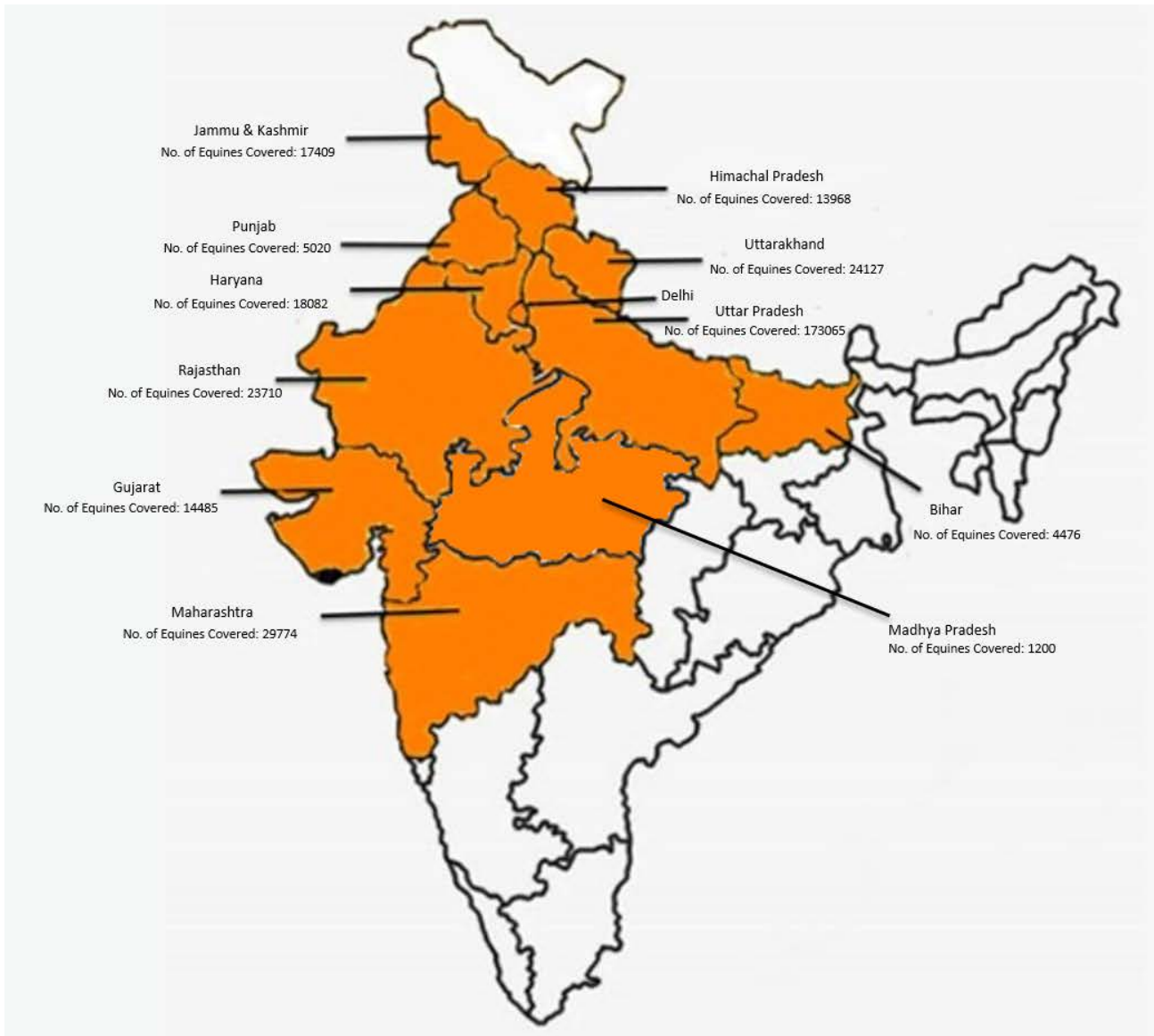
- Propelling policy change, amendment and modulation of relevant laws/rules to enhance better health and welfare of working equids at national and state level.
- Inclusion of equines in policies at national and state level to increase visibility and appreciate the contribution of equine in different work sectors.
- Networking with veterinary universities, research institutes and other organizations to achieve organisational goals.

Information and Communication Technologies (ICT)

- Increasing visibility and credibility of Brooke India through various social media platforms.
- Disseminating relevant information through simple and user friendly technology for engaging community and stakeholders.
- Collecting qualitative evidence from field to showcase Brooke India's work to donors and supporters.



WHERE DO WE WORK?



WE WORK IN COLLABORATION WITH:



FIND MORE ABOUT US AT:



@theBrookeIndia



@thebrookeindia



@BrookeIndia1



Brooke India



@brookeindia

Brooke Hospital For Animals (India)
E-61, Preet Vihar, New Delhi -110092

